

Ring Cairn near Long Lane



Arthur Batty

Front Cover.
Showing the Ring Cairn across the centre of photograph

Photograph: Arthur Batty

Acknowledgements

The author would like to thank the following people for their assistance with this project:

Dr. J. Farrer for allowing access onto his property

Mr. J. Price for assistance with the surveying

Mrs. A. Batty for editing and desk-top publishing

Ring Cairn – Long Lane

This Ring Cairn is located at SD 7565 6960 (Fig 1) and consists of a low bank approximately 17m in diameter, measured from the centre of the outer bank, in a E/W direction. It is marked as an enclosure on current OS maps, but we have found no record of any previous research on this site. The profile of the cairn is clearly defined on the magnetometer survey (Fig 2) and within it there are several high readings, suggesting areas of burning or deposition of burnt material. Aerial photograph (Plate 1) does not define the cairn very clearly but a topological survey (Fig 3) with vertical exaggeration and hachured drawing (Fig 4) show the profile much clearer. Details of the stratigraphy from a core taken into one of these high readings is shown in (Fig 5). A charcoal sample taken from the lower burnt section which also contained burnt bone was sent for radio carbon dating, returning a date of 1950BC to 1750BC, (Fig 6) this is considered to be early Bronze Age. At first sight the two separate layers of burnt deposit would suggest two different periods of deposition, but this may not be correct. It is possible that the lower burnt deposit was placed in a pit and buried by the soil that had been dug out and the upper layer of burnt deposit could have occurred immediately after this, which would make both layers of deposit contemporary. We do have a sample of charcoal from the upper burnt layer and this will be dated in due course along with other research on these deposits.

There is also another circular feature in this field at SD 7555 6958 this appears to have had a trench dug across the outer bank, (Fig 7) and could possibly have been excavated by James Farrer who was a keen archaeologist. A magnetometer survey of this feature (Fig 8) shows a high reading in the excavation trench which is probably metallic agricultural trash. The circular bank is 12m in diameter and almost impossible to define on the magnetometer survey, and there are two other high readings one is situated on the outer bank, and the other near the centre of the Roundhouse, we inspected the latter and it was one small burnt stone. This survey contrasts considerably with the Ring Cairn one, and suggests that it is possibly a Roundhouse, the lack of magnetic readings within Roundhouses and transient circles is very common in this area, we do not know if these remains are contemporary with the Ring Cairn. This report should be read in conjunction with a previous one we published (Ref Batty, 2011).

Bibliography

Batty. A, (2011) *Ring Cairn in Haws House Pasture Chapel Le Dale.*

Other Research

This can be accessed at [http:// www.ingleborougharchaeology.org.uk/](http://www.ingleborougharchaeology.org.uk/)

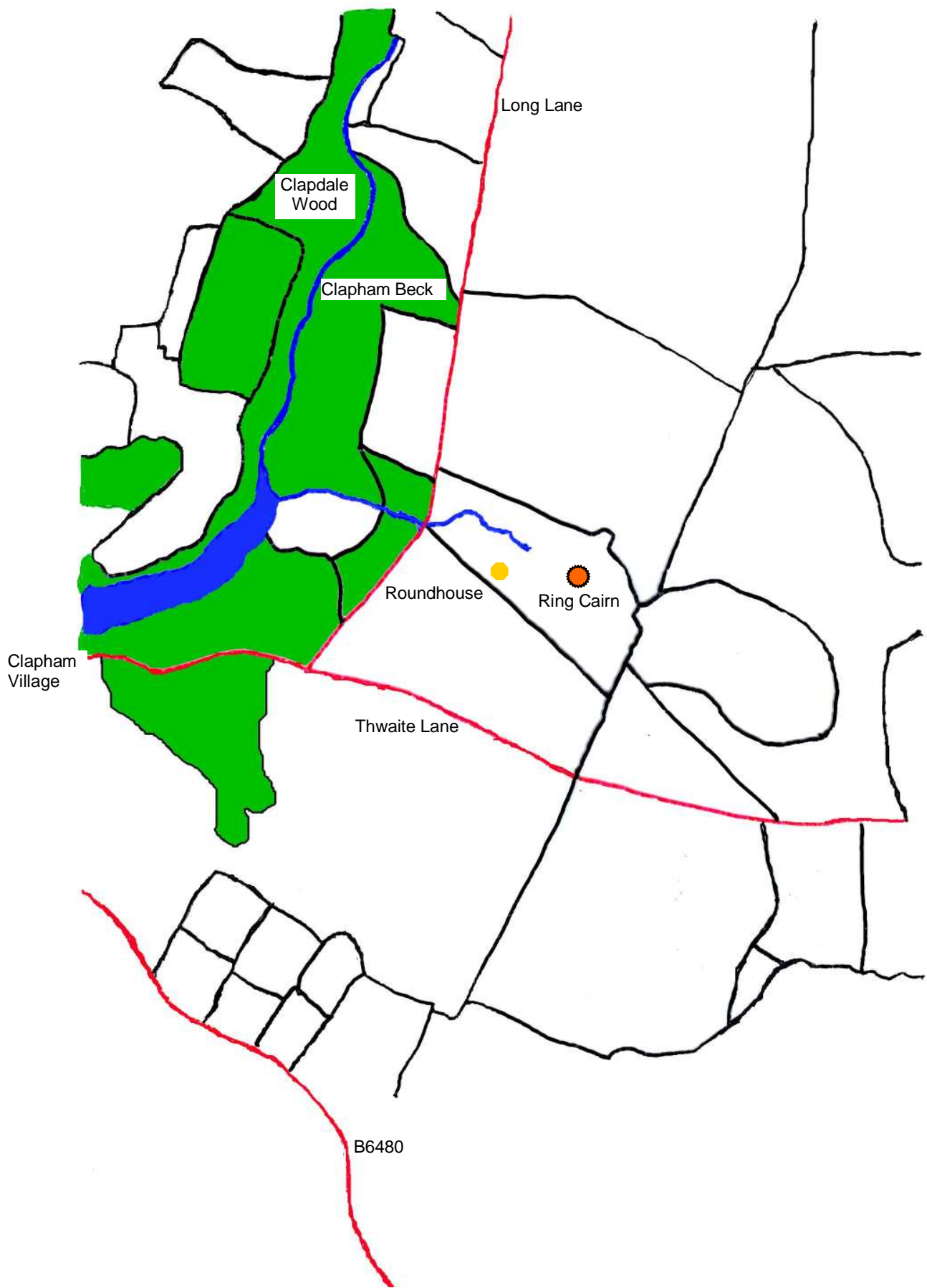


Fig 1: Location map

Geoplot 3.0 - Gradiometer Data - c:\geoplot\comp\llane1\llane2.cmp +++

Data Set:

Top Left Corner X,Y: 3, 4

Bottom Right Corner X,Y: 400, 440

Display Parameters

Shade Plot (Clip)

Minimum: -3

Maximum: 3

Contrast: 1

Units: Std Dev

Palette: greycol7.ptt

Palette Option: Normal

Plotting Scale: 1:150

Printer Resolution (X): 600dpi

Printer Resolution (Y): 600dpi

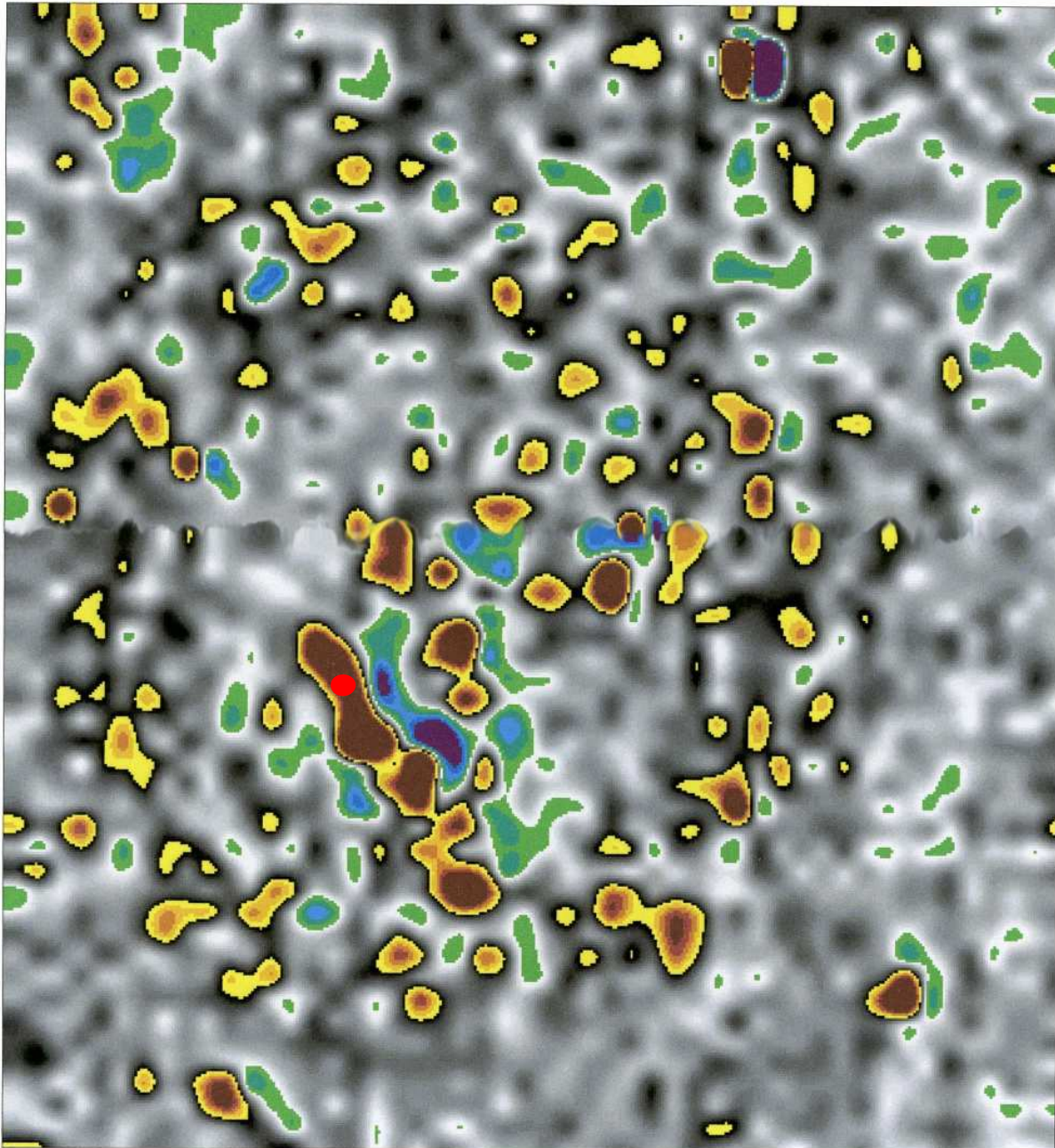
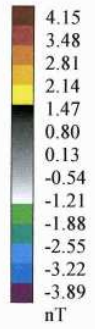


Fig 2: 25m x 25m Magnetometer Survey of the Ring Cairn
The red spot marks the position where a one metre core sample was taken.



Plate 1: Aerial photograph.
The Ring Cairn can be faintly seen just above the centre of the photograph. The red dot marks the position of the core sample.

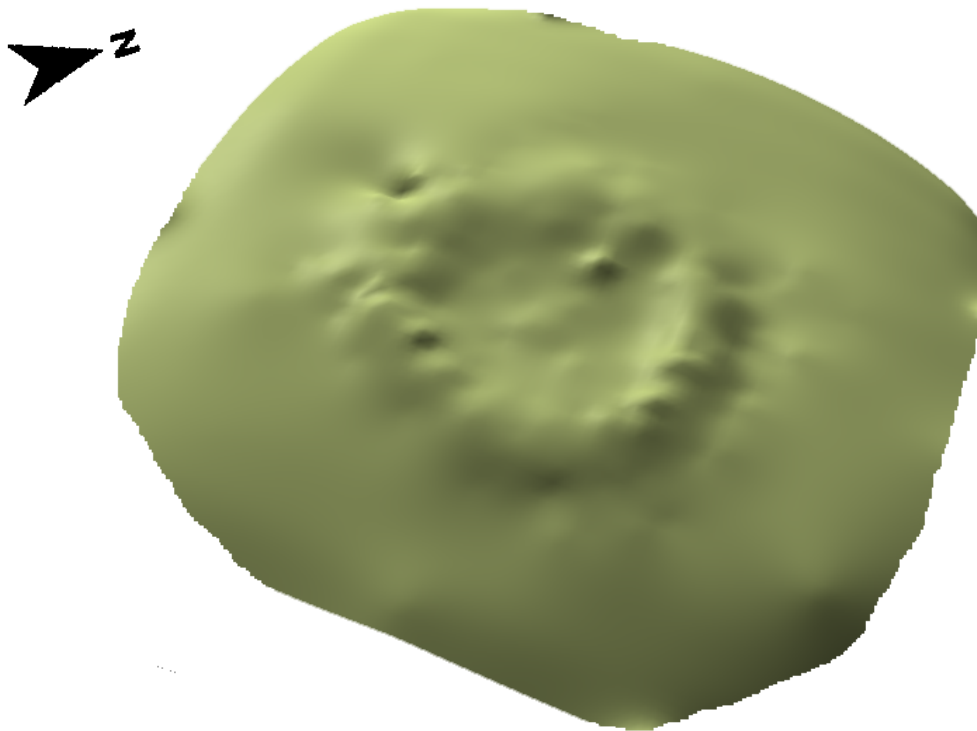


Fig 3: Topological survey of Ring Cairn

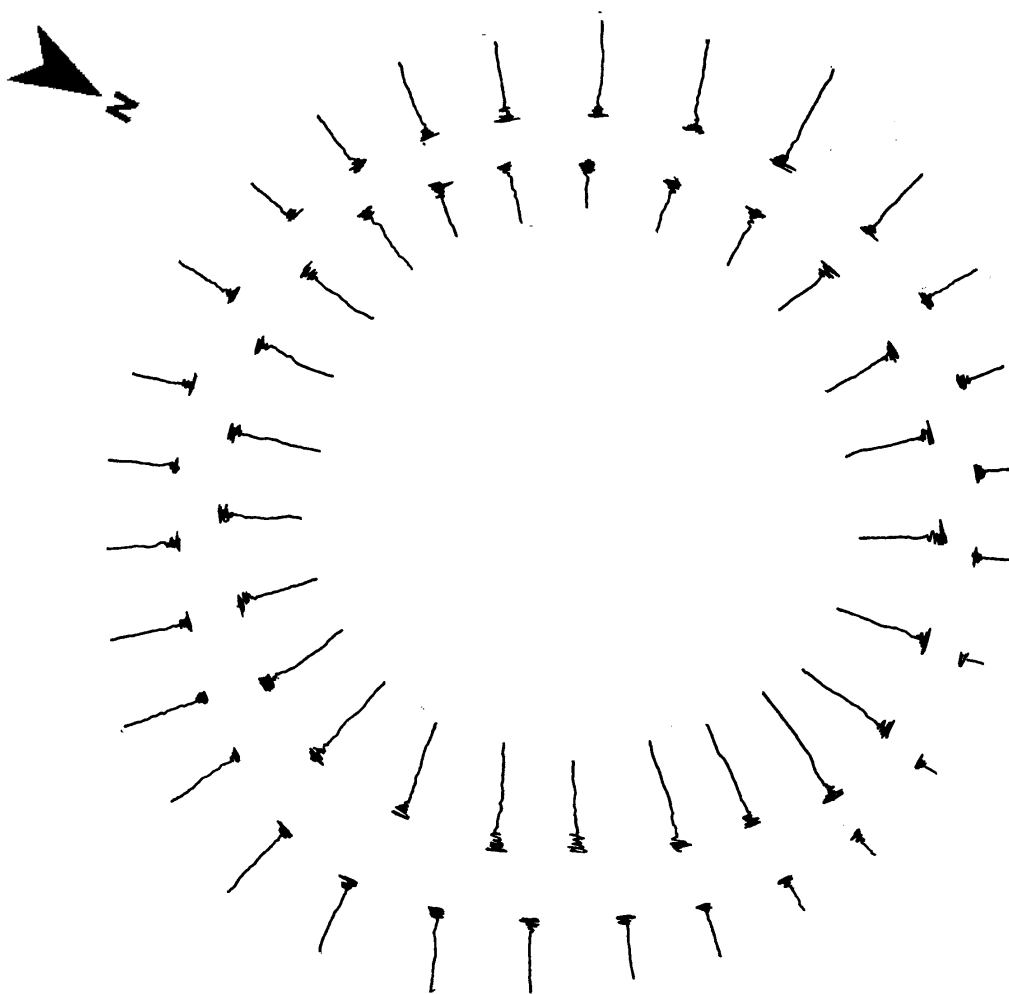


Fig 4: Hachured drawing of Ring Cairn

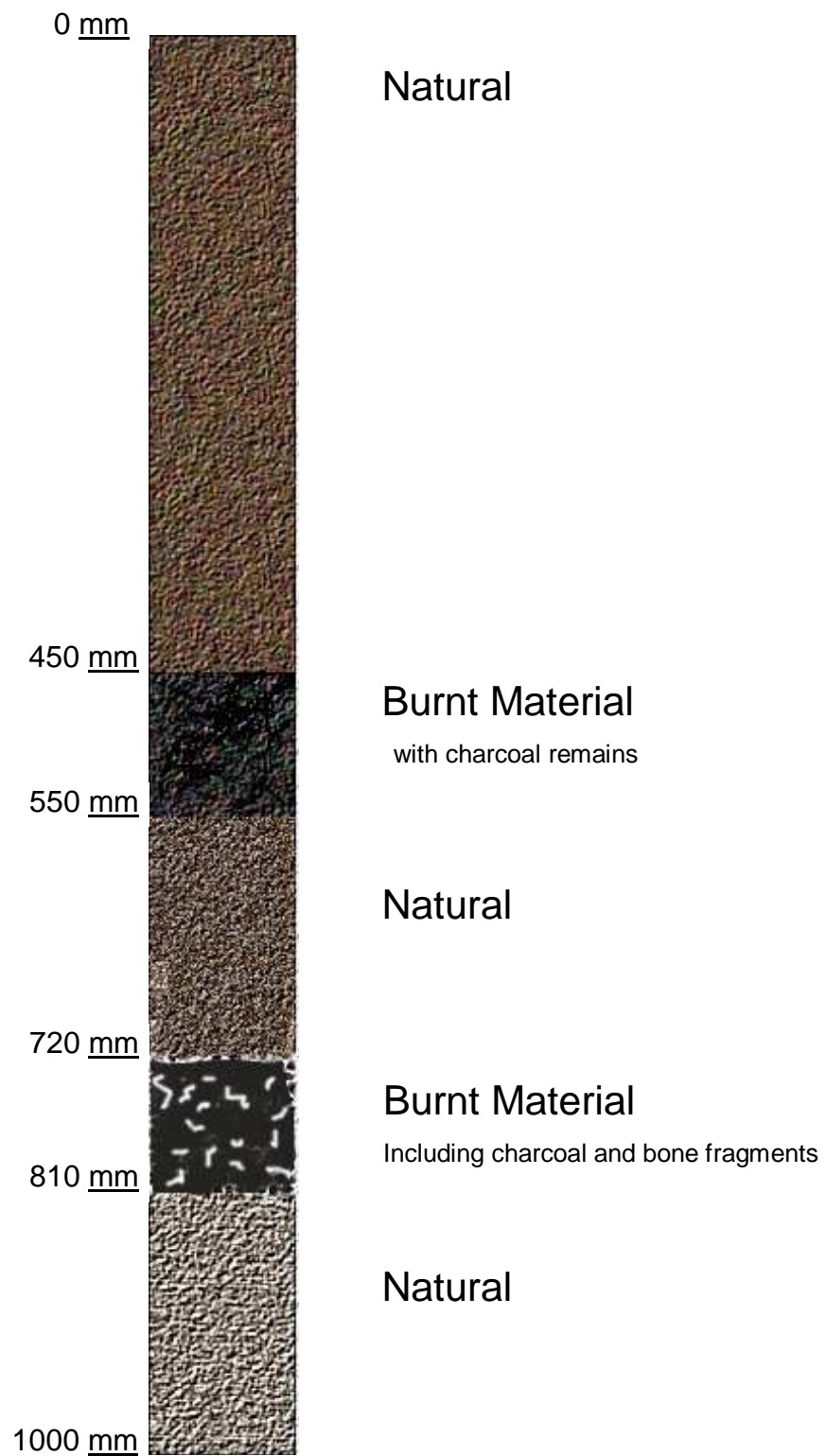


Fig 5: Stratigraphic detail of 1m core taken within the Ring Cairn.

Calibration Plot

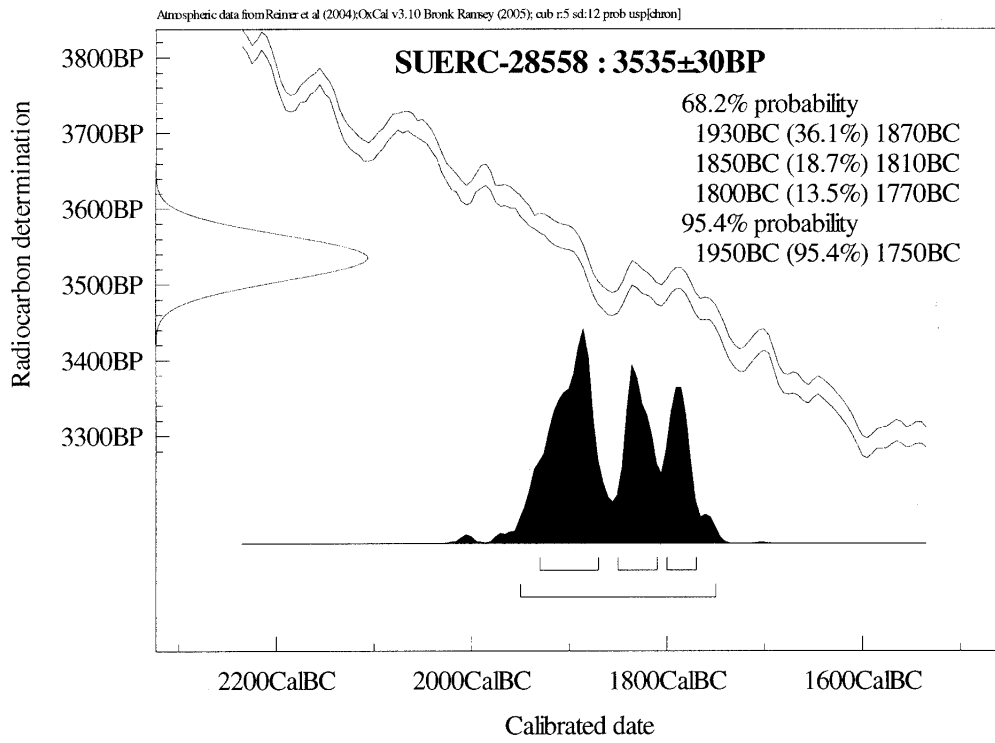


Fig 6: Radiocarbon dating information

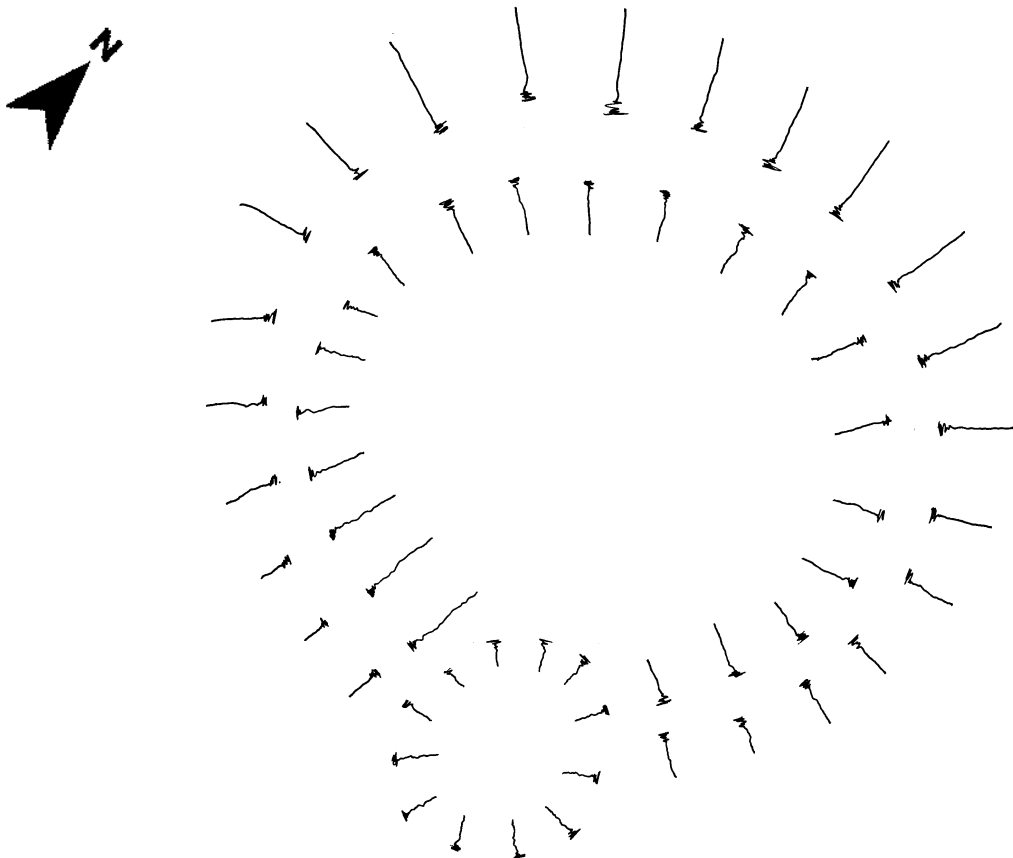


Fig 7: Hachured drawing of roundhouse 12m in diameter

Geoplot 3.0 - Gradiometer Data - c:\geoplot\comp\llane2\llane3.cmp +++

Data Set:
Top Left Corner X,Y: 1, 1
Bottom Right Corner X,Y: 320, 320



Display Parameters
Shade Plot (Clip)
Minimum: -3
Maximum: 3
Contrast: 1
Units: Std Dev
Palette: greycol7.ptt
Palette Option: Normal
Plotting Scale: 1:150
Printer Resolution (X): 600dpi
Printer Resolution (Y): 600dpi

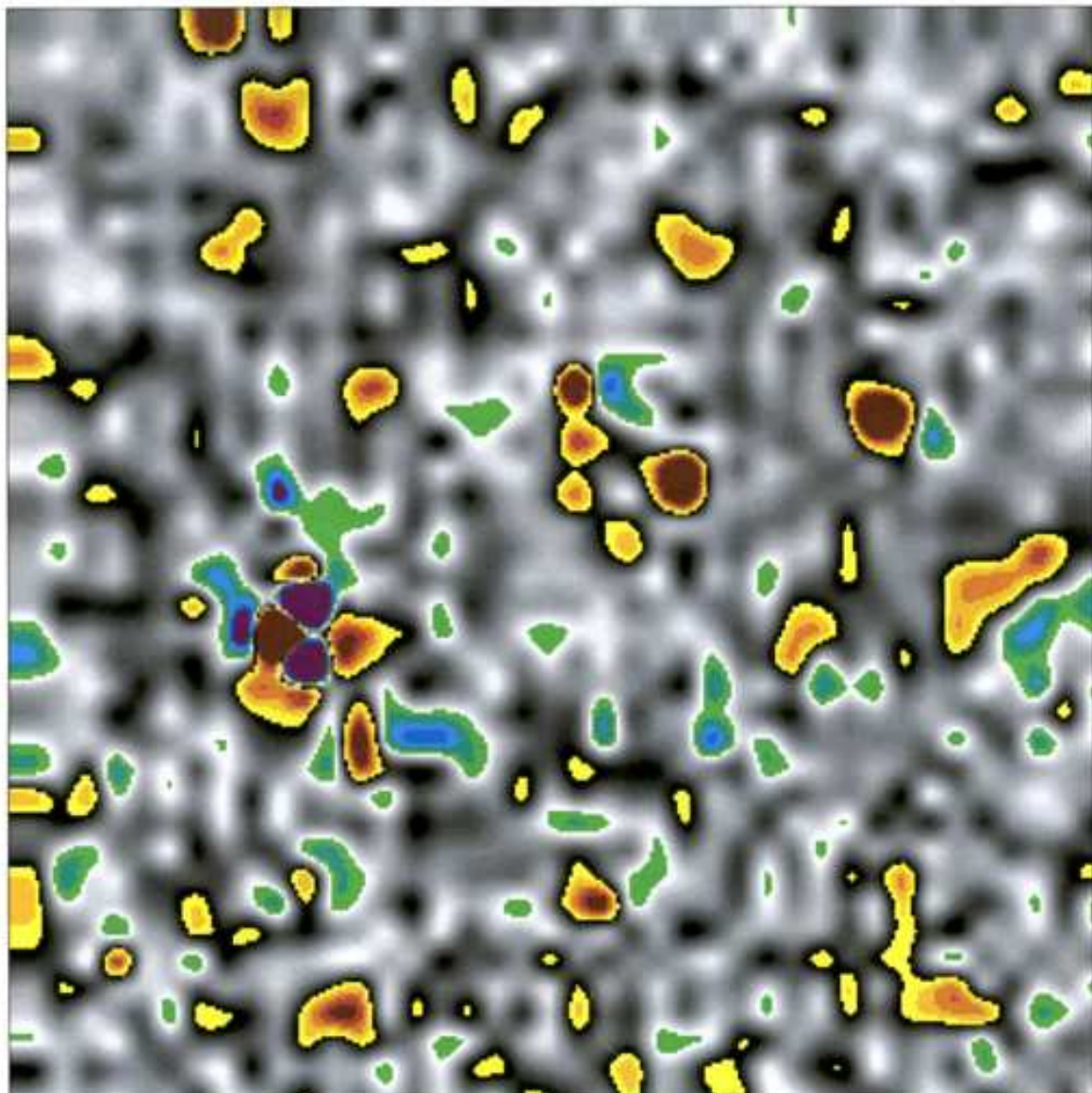
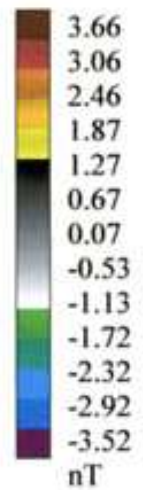


Fig 8: 20m x 20m Magnetometer survey of Roundhouse